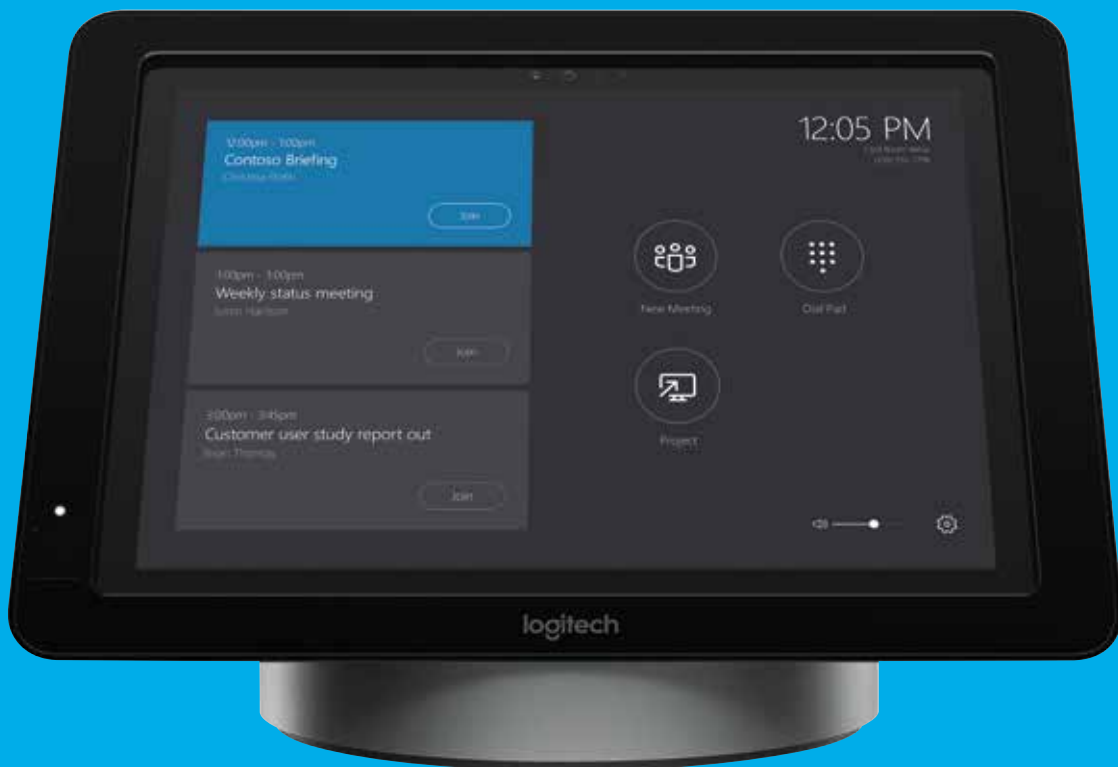


logitech

GET SMART.
GET CONNECTED.



Logitech SmartDock

Logitech® SmartDock is an AV control console that revolutionizes the Skype® for Business collaboration experience. Simply walk into a conference room and start your meeting with one-touch join.

Designed in partnership with Microsoft®, SmartDock enables expanded I/O for Surface® Pro that includes support for dual HDMI displays, three USB 3.1 ports and Gigabit

Ethernet, allowing the IT administrator to connect recommended devices, such as Logitech ConferenceCams. An embedded motion sensor activates the system when anyone enters the room. Content sharing from a laptop is a snap with 1080p60 HDMI input and capture. With the optional extender box, a single 5m cable with HDMI, USB, LAN and power provides a clean and streamlined

installation on the conference table.

The pivoting, cast-metal base provides enhanced security for Surface Pro. The combination of tamper-resistant screws and a K-lock ensures the tablet is always in place and ready for your meeting.

With Smartdock, pure elegance meets total control to enable consistently remarkable Skype for Business collaboration.

Logitech SmartDock



Affordable, fully-integrated Skype for Business for the meeting space

Fully endorsed by Microsoft, SmartDock provides a complete Skype for Business solution for the meeting space that seamlessly works with your existing displays and Logitech ConferenceCams. With meeting solutions for small to large-sized rooms - now every room can be a video enabled Skype meeting place.

HDMI input for automatic content sharing

SmartDock includes a 1080p60 HDMI input to enable fluid HD content sharing from a laptop—PowerPoint to streaming video (and everything in between!)

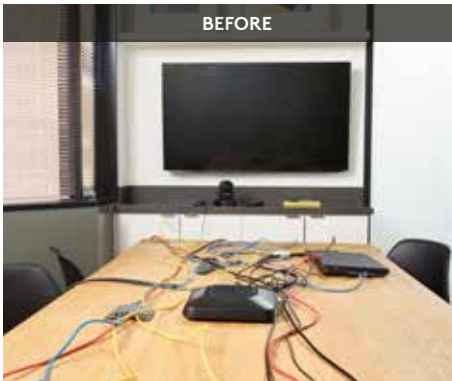
Clean and clutter free

The SmartDock Extender Box eliminates the need for a separate GROUP hub and power brick, providing a clutter free and clean conference table. The 5m cable with integrated HDMI, USB, power and LAN connectivity supports larger conference room deployments.

Loaded with connectivity

SmartDock supports dual HD displays, an HDMI input for 1080p60 content sharing, three USB 3.1 type A ports, Gigabit Ethernet, and a headset mini-plug, allowing users to bring multiple devices to a meeting.

Untangle your Video Meetings with SmartDock



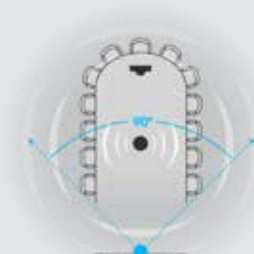
EXTEND SKYPE FOR BUSINESS TO EVERY MEETING SPACE

Small/Huddle (up to 6 people)



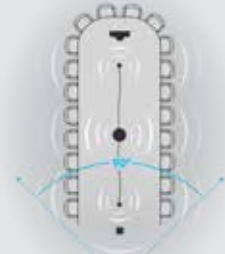
MeetUp & SmartDock

Mid to Large-size Room (up to 14 people)



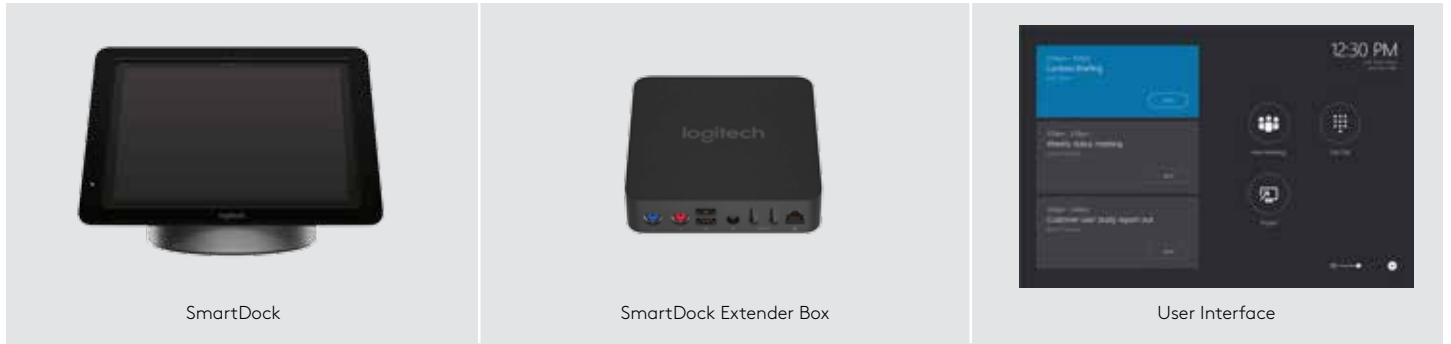
GROUP & SmartDock

Larger Room (up to 20 people)



GROUP & SmartDock + Extender Box

Logitech SmartDock



FEATURES & BENEFITS

AV console

SmartDock and Microsoft Surface Pro optimize the Skype for Business collaboration experience in meeting spaces. Leave your laptop at your desk, walk into any meeting space, and start an optimized Skype for Business video conference with one-touch join.

Powered, secure mount for Surface Pro

Tamper-resistant screws and a K-lock provide enhanced security and help ensure that Surface Pro is always in place, charged, and ready for the most important meeting—yours!

Pivoting, cast-metal support platform

The sturdy, elegantly designed base provides a premium mount for Surface Pro with elegant industrial design.

Extended I/O for Surface Pro

Supports a wide variety of deployments and device connectivity with dual 1080p display ports, an HDMI input for 1080p60 content sharing, three USB 3.1 type A ports, Gigabit Ethernet, and a headset mini-plug.

IR motion sensor

Conveniently wakes the system when motion is detected in the meeting space and enables energy saving hibernation mode when the room is empty.

Streamlined deployment

An optional extender box combines HDMI, USB, LAN and power cords into a single 5m cable for a clean, clutter-free installation on the conference table.

Integrated support for Logitech GROUP in optional Extender Box

When used with Logitech GROUP, SmartDock Extender Box eliminates the need for the GROUP hub, power supply and associated cables.

Designed in partnership with Microsoft

Close collaboration between Logitech and Microsoft ensures full and seamless integration with Surface Pro and Skype for Business.

Plug-and-play camera setup

Simply connect camera to powered hub with 4.9m/16' cable provided to get up and running in a snap.

SmartDock works with all Logitech ConferenceCams

SmartDock works with a wide range of meeting room AV devices. All Logitech ConferenceCams work with SmartDock.

Optimized for Skype for Business

SmartDock provides a low-cost, high-quality Skype for Business collaboration experience in shared meeting spaces.

FEATURES

SmartDock

- Powered, secure mount for Surface Pro
- Pivoting, cast-metal support platform
- Extended I/O for Surface Pro
- IR motion sensor

- Kensington® security slot
- Designed in partnership with Microsoft
- Optimized for Skype for Business

Extender Box

- Single cable streamlines deployment
- Integrated support for Logitech GROUP
- VESA mount
- Compact 5x5" footprint



Logitech SmartDock



PRODUCT SPECIFICATIONS

SmartDock

Part #: 960-001111
EAN: 5099206067622

Extender Box

Part #: 960-001118
EAN: 5099206067646

For Bundle options with a Logitech ConferenceCam, Microsoft Surface Pro, and Skype for Business meeting room client, contact your channel reseller.

PRODUCT DIMENSIONS + WEIGHT

SmartDock

239 x 334 x 209mm
9.4 x 13.2 x 8.2"
2738g/6.04lb

Extender Box

34 x 128 x 128mm
1.3 x 5.0 x 5.0"
360g/0.79lb

Cable Length

HDMI: 3m/9.8'
Network: 3m/9.8'
Power: 3m/9.8'
Extender Box: 5m/16.4'

INSIDE THE BOX

SmartDock

Power Supply
Ethernet cable
Two HDMI cables
Assembly tools
Documentation
Logitech SmartDock

SmartDock Extender Box

5m/16ft Extender Cable
VESA Mounting Plate 100x100mm
Hook and loop pads
Documentation
Logitech SmartDock Extender Box

SmartDock + Extender Box

All components included with Logitech SmartDock & Logitech SmartDock Extender Box

SYSTEM REQUIREMENTS

Microsoft Surface Pro with Skype for Business meeting room client
Skype for Business Account
Ethernet
External Display with HDMI input
100-240v AC Power

CERTIFICATIONS

SmartDock

Windows 10
FCC
UL

Extender Box

Windows 10
FCC
UL

WARRANTY

2-year limited hardware

Learn more at: www.logitech.com

For orders or further questions, please contact your preferred reseller.

Logitech Europe S.A., EPFL - Quartier de l'Innovation
CH-1015 Lausanne

© 2017 Logitech. Logitech, the Logitech logo and other Logitech marks are owned by Logitech and may be registered.

All other trademarks are the properties of their respective owners. Logitech assumes no responsibility for any errors that may appear in this publication. Product, pricing and feature information contained herein is subject to change without notice.